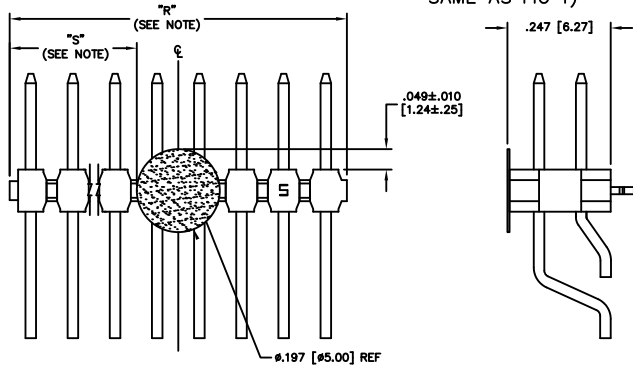


REV CS

NOTE: "R" = USED MEASURED DIMENSION (REF)
 "S" = $\{ ("R" - .1989 [5.000]) / 2 \} \pm .020 [1.51]$

FIG 5

-K: POLYIMIDE FILM
 (DIFFERENT AS SHOWN, OTHERWISE
 SAME AS FIG 1)



DIMENSIONS ARE IN INCHES		UNLESS OTHERWISE NOTED		TOLERANCES ARE:		TITLE:	DWG NO:
ONE PLACE DECIMALS ± .1 [3]	THREE PLACE DECIMALS ± .005 [-13]	ANGLES	± 2°			TERMINAL STRIP DOUBLE SURFACE MOUNT	TSM-1XX-XX-XXX-XX-XX-XXX-XX SHEET 2 OF 3
TWO PLACE DECIMALS ± .01 [-3]	FOUR PLACE DECIMALS ± .0020 [-051]						

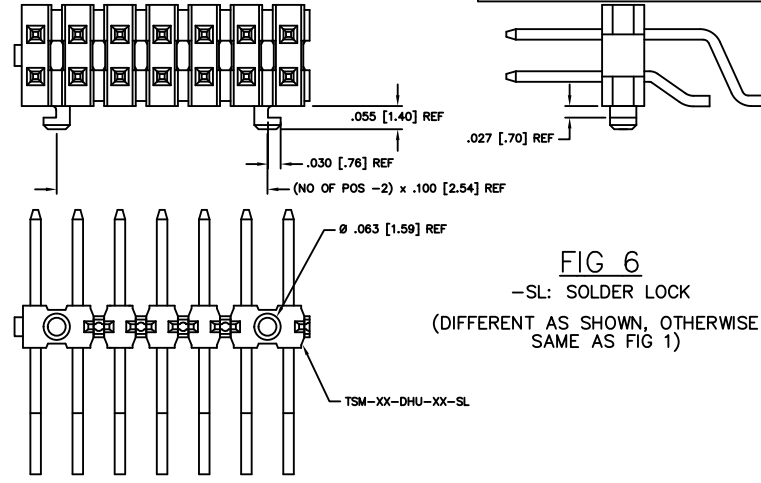
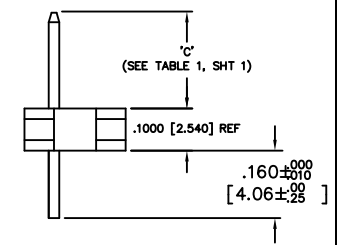
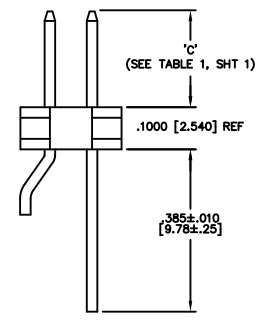


FIG 6

-SL: SOLDER LOCK
 (DIFFERENT AS SHOWN, OTHERWISE
 SAME AS FIG 1)



IN-PROCESS 1



IN-PROCESS 2

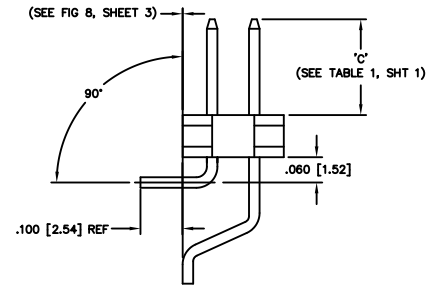


FIG 4

-MT: MIXED TECHNOLOGY
 (DIFFERENT AS SHOWN,
 OTHERWISE SAME AS FIG 1)

• PROPRIETARY NOTE •
 ALL DIMENSIONS ARE IN INCHES UNLESS OTHERWISE NOTED
 TOLERANCES ARE: ONE PLACE DECIMALS ± .1 [3] TWO PLACE DECIMALS ± .01 [-3] THREE PLACE DECIMALS ± .005 [-13] FOUR PLACE DECIMALS ± .0020 [-051] ANGLES ± 2°

MISC\MKTG
 TSM-1XX-XX-XXX-XX-XX-XXX-XX-MKT2

samtec

520 PARK EAST BLDG. NEW ALBANY, INDIANA 47150
 PHONE (812) 944-8733 P.O. BOX 1147
 CODE 55322

MADE BY: BRATCHER 7-27-95 TSM-1XX-XX-XXX-XX-XX-XXX-XX
 SHEET 2 OF 3