

# FRED Module

Fast Recovery Epitaxial Diode

Single Diode

$$V_{RRM} = 1200 \text{ V}$$


$$I_{FAVM} = 453 \text{ A}$$

$$t_{rr} = 500 \text{ ns}$$

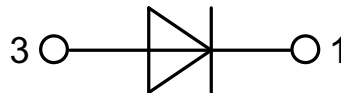
## Part number

MEO 450-12DA



 E72873

Backside: isolated



### Features / Advantages:

- International standard package with DCB ceramic base plate
- Planar passivated chips
- Short recovery time
- Low switching losses
- Soft recovery behaviour
- High reliability circuit operation
- Low voltage peaks for reduced protection circuits
- Low noise switching
- Low losses

### Applications:

- Antiparallel diode for high frequency switching devices
- Free wheeling diode in converters and motor control circuits
- Inductive heating and melting
- Uninterruptible power supplies (UPS)
- Ultrasonic cleaners and welders

### Package: Y4-M6

- Isolation voltage: 3600 V~
- Industry standard outline
- Soldering pins for PCB mounting
- Base plate: DCB ceramic
- Reduced weight
- Advanced power cycling

### Disclaimer Notice

Information furnished is believed to be accurate and reliable. However, users should independently evaluate the suitability of and test each product selected for their own applications. Littelfuse products are not designed for, and may not be used in, all applications. Read complete Disclaimer Notice at [www.littelfuse.com/disclaimer-electronics](http://www.littelfuse.com/disclaimer-electronics).

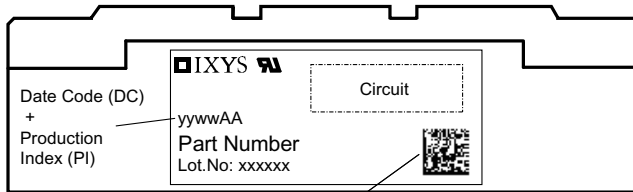


Diode				Ratings			
Symbol	Definitions	Conditions	min.	typ.	max.		
$V_{RSM}$	max. non-repetitive reverse		$T_{VJ} = 25^{\circ}C$			1200	V
$V_{RRM}$	max. repetitive reverse		$T_{VJ} = 25^{\circ}C$			1200	V
$I_R$	reverse current	$V_R = V_{RRM}$ $V_R = 0.8 \cdot V_{RRM}$ $V_R = 0.8 \cdot V_{RRM}$	$T_{VJ} = 25^{\circ}C$			24	mA
			$T_{VJ} = 25^{\circ}C$			6	mA
			$T_{VJ} = 125^{\circ}C$			120	mA
$V_F$	forward voltage	$I_F = 300 A$	$T_{VJ} = 25^{\circ}C$			1.78	V
			$T_{VJ} = 125^{\circ}C$			1.51	V
		$I_F = 520 A$	$T_{VJ} = 25^{\circ}C$			1.96	V
			$T_{VJ} = 125^{\circ}C$			1.76	V
$I_{FRMS}$	RMS forward current		$T_C = 75^{\circ}C$			640	A
$I_{FAV}$ ①	average forward current	$T_C = 75^{\circ}C$ rectangular, d = 0.5	$T_{VJ} = 150^{\circ}C$			453	A
$V_{T0}$	threshold voltage	for power-loss calculations only	$T_{VJ} = T_{VJM}$			1.16	V
$r_T$	slope resistance					1.15	mΩ
$R_{thJC}$	thermal resistance junction to case					0.071	K/W
$R_{thCH}$	thermal resistance junction to heatsink				0.043		K/W
$P_{tot}$	total power dissipation		$T_{VJ} = 25^{\circ}C$			1750	W
$I_{FSM}$	max. surge forward current	t = 10 ms (50 Hz), sine t = 8.3 ms (60 Hz), sine	$T_{VJ} = 45^{\circ}C$			4.80	kA
						5.28	kA
			$T_{VJ} = 150^{\circ}C$			4.32	kA
						4.75	kA
$I^2t$	$I^2t$ value for fusing	t = 10 ms (50 Hz), sine t = 8.3 ms (60 Hz), sine	$T_{VJ} = 45^{\circ}C$			115.2	kA <sup>2</sup> s
						117.1	kA <sup>2</sup> s
			$T_{VJ} = 150^{\circ}C$			93.3	kA <sup>2</sup> s
						94.8	kA <sup>2</sup> s
$t_{rr}$	max. reverse recovery current	$I_F = 450 A$ ; $-di_F/dt = 800 A/\mu s$	$T_{VJ} = 25^{\circ}C$			250	ns
			$T_{VJ} = 100^{\circ}C$			500	ns
$I_{RM}$	reverse recovery time	$V_R = 600 V$ ; $L \leq 0.05 \mu H$	$T_{VJ} = 25^{\circ}C$			80	A
			$T_{VJ} = 100^{\circ}C$			125	A

①  $I_{FAVM}$  rating includes reverse blocking losses at  $T_{VJM}$ ,  $V_R = 0.8 V_{RRM}$ , duty cycle d = 0.5

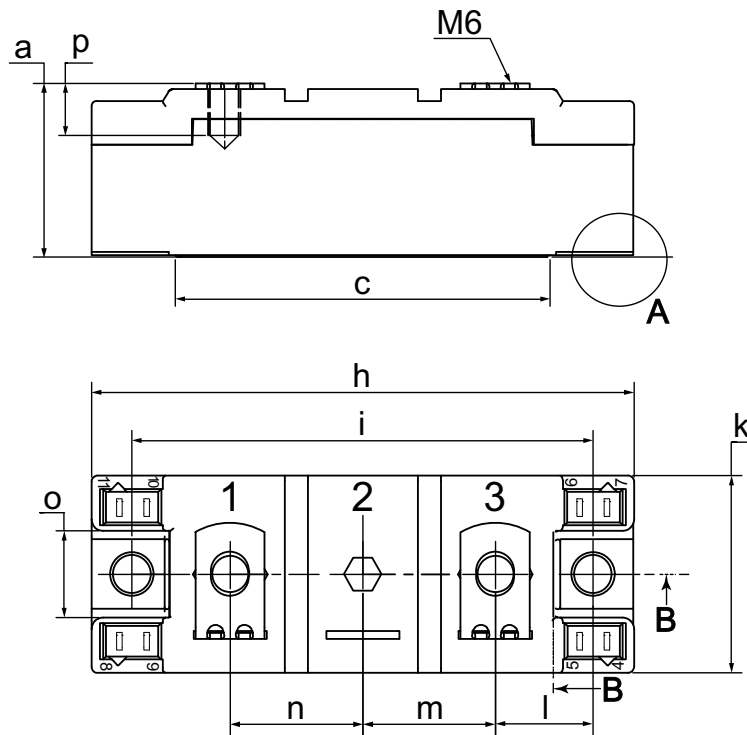


Package Y4-M6				Ratings		
Symbol	Definitions	Conditions	min.	typ.	max.	
$I_{RMS}$	RMS current	per terminal			300	A
$T_{VJ}$	virtual junction temperature		-40		150	°C
$T_{op}$	operation temperature		-40		125	°C
$T_{stg}$	storage temperature		-40		125	°C
<b>Weight</b>					108	g
$M_D$	mounting torque		2.25		2.75	Nm
$M_T$	terminal torque		4.5		5.5	Nm
$d_{Spp/App}$	creepage distance on surface   striking distance through air	terminal to terminal	14.0	10.0		mm
$d_{Spb/Apb}$		terminal to backside	16.0	16.0		mm
$V_{ISOL}$	isolation voltage	t = 1 second t = 1 minute	50/60 Hz, RMS; $I_{ISOL} \leq 1$ mA		3600 3000	V V

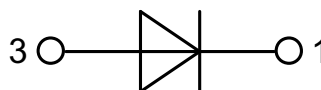
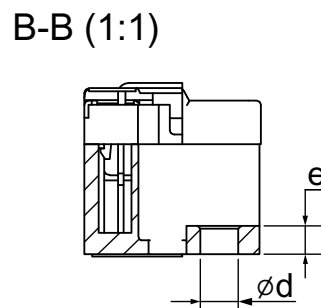
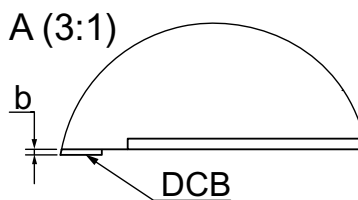


Data Matrix: part no. (1-19), DC + PI (20-25), lot.no.# (26-31), blank (32), serial no.# (33-36)

Ordering	Ordering Number	Marking on Product	Delivery Mode	Quantity	Code No.
Standard	MEO 450-12DA	MEO 450-12DA	Box	6	464635

**Outlines Y4-M6**


Dim.	MIN [mm]	MAX [mm]	MIN [inch]	MAX [inch]
a	30.0	30.6	1.181	1.205
b	typ. 0.25		typ. 0.010	
c	64.0	65.0	2.520	2.559
d	6.5	7.0	0.256	0.275
e	4.9	5.1	0.193	0.201
h	93.5	94.5	3.681	3.720
i	79.5	80.5	3.130	3.169
k	33.4	34.0	1.315	1.339
l	16.7	17.3	0.657	0.681
m	22.7	23.3	0.894	0.917
n	22.7	23.3	0.894	0.917
o	14.0	15.0	0.551	0.591
p	typ. 10.5		typ. 0.413	



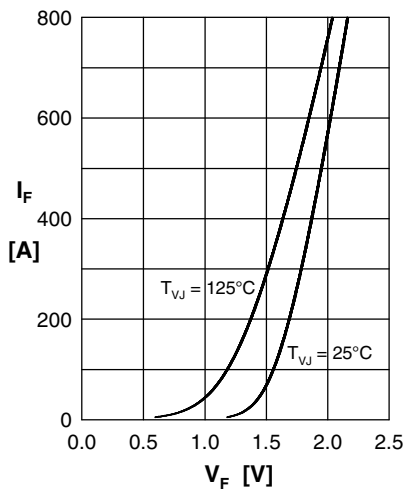
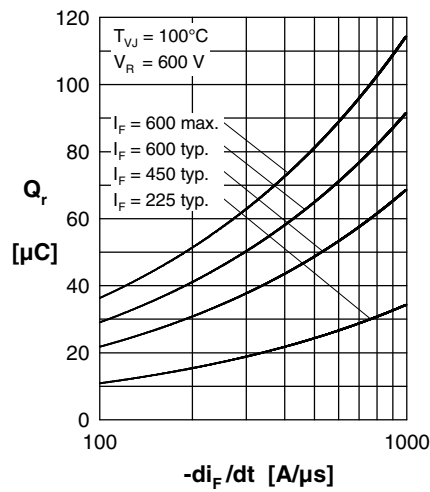
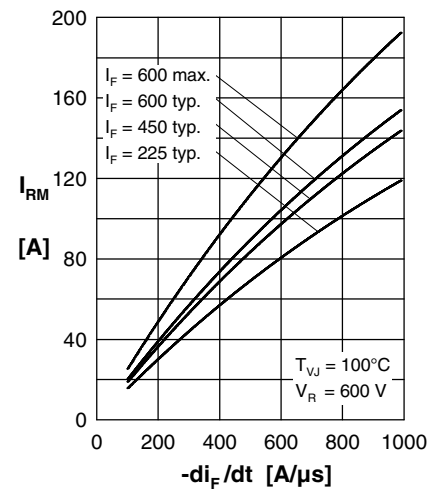
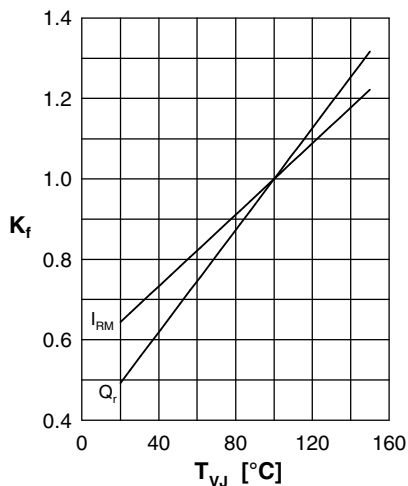
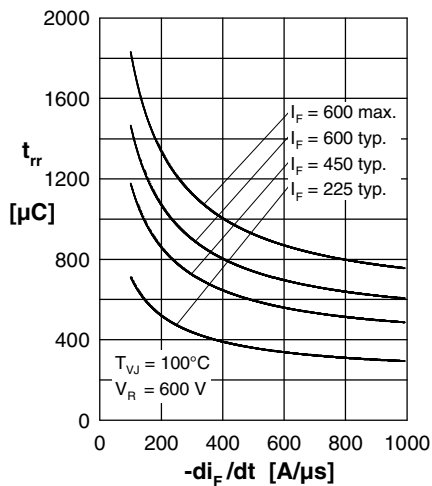
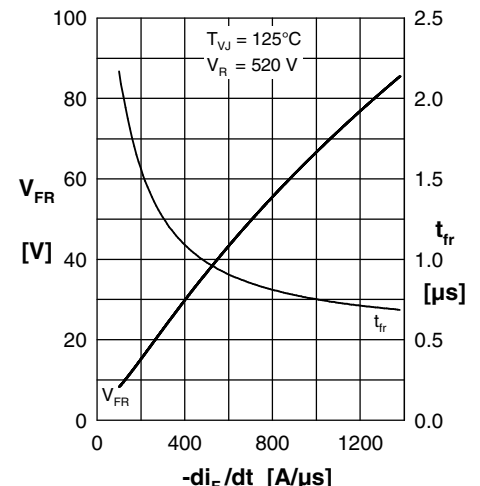
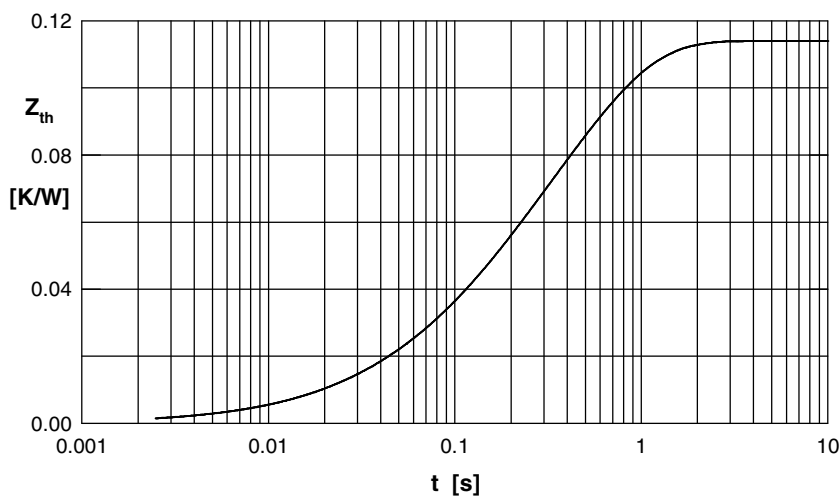
**Curves**

 Fig. 1 Typ. forward current  $I_F$  vs.  $V_F$ 

 Fig. 2 Typ. reverse recovery charge  $Q_r$  versus  $-di_F/dt$ 

 Fig. 3 Typ. peak reverse current  $I_{RM}$  versus  $-di_F/dt$ 

 Fig. 4 Typ. dynamic parameters  $Q_r$ ,  $I_{RM}$  versus  $T_{VJ}$ 

 Fig. 5 Typ. recovery time  $t_{rr}$  vs.  $-di_F/dt$ 

 Fig. 6 Typ. peak forward voltage  $V_{FR}$  and  $t_{fr}$  versus  $T_{VJ}$ 


Fig. 7 Typ. transient thermal impedance junction to case

IXYS reserves the right to change limits, test conditions and dimensions

 Constants for  $Z_{thJS}$  calculation:

i	$R_{thi}$ (K/W)	$t_i$ (s)
1	0.001	0.08
2	0.004	0.024
3	0.027	0.112
4	0.082	0.464